



## ILE CLUB DAYBED | OUTDOOR

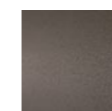
design Piero Lissoni

Outdoor Daybed, single or double, with steel seat chassis coated with a galvanizing base for outdoor and finished with epoxy powder coating for outdoor, coated rubber elastic straps and hooks in Stainless Steel. Backrest in plywood panel for outdoor adjustable through a mechanism. Seat and backrest cushions padded with open cell structure polyurethane foam DRYFEEL S, coated with fibre layers for outdoor and covered with a waterproof fabric.

AISI 316 Stainless Steel square section tube base, matt satin-finish or lacquered with epoxy powder coating gunmetal grey colour or burnished colour. Standard base with wheels only in the single version 85x188 cm. Upholstery with outdoor fabrics only, fully removable by zippers and Velcro fastenings.

For all version backrest adjustable through a mechanism in 5 different positions from daybed up to height of 82 cm. Seat depth 124 cm.

### Base



Burnished  
Painting



Stainless Steel  
with Matt Satin  
Finish

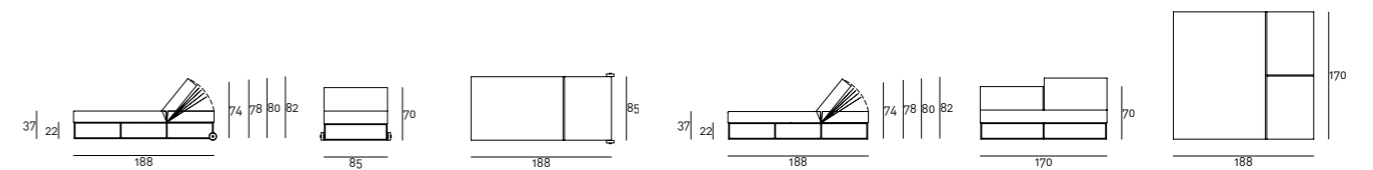


Gunmetal Grey  
Lacquering

### Technical Drawings

Indoor

Single with Wheels



### Notes

A protective cover is available to preserve the product in summer and winter. This cover is water vapour repellent and prevents mould and corrosion. It can be washed with water and soap. Do not keep the fabric folded for a long time when it is wet.