



MAJA D (INDOOR + OUTDOOR)

design Piero Lissoni

Armchair available for indoor and outdoor.

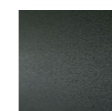
Indoor version: tubular steel frame, with black epoxy powder coating for the model without housse and long skirt, while with gunmetal grey colour for the version with short skirt. Seat chassis in poplar plywood with cross-woven coated rubber elastic straps. Seat and backrest padded with insert in polyurethane foam. Covering in 100% polyether thermally bonded onto a polyamide velveteen backing. Upholstery in fabric only (except velvet), zipped to the polyether covering for the version with housse only and fully removable by zippers and Velcro fastenings. For the version without housse, upholstery in leather or fabric, fully removable by zippers after unscrewing the seat chassis from the frame for the fabric version only.

Outdoor version: frame in tubular AISI 316 Stainless Steel with matt satin-finish or with epoxy polyester powder coating gunmetal grey colour, burnished colour or black colour. Seat panel in plywood for outdoor with cross-woven coated rubber elastic straps. Seat and backrest padded with polyurethane foam DRYFEEL S. Available only in the version without housse. Upholstery with outdoor fabrics, fully removable by zippers after unscrewing the seat panel from the frame. Seat depth: 45cm.

Structure



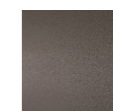
Painted Steel
RAL-K7 9017
Black
(In-Outdoor)



Steel with
Gunmetal Grey
Coating
(In-Outdoor)



Stainless Steel
with Matt Satin
Finish
(Outdoor)



Burnished
Painted Steel
(Outdoor)

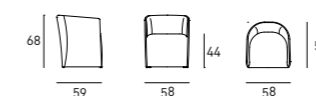
Technical Drawings



Short skirt



Long skirt





—
Maja D armchair with short skirt



—
Maja D armchair without skirt