



**ILE POUF (INDOOR + OUTDOOR)**

design Piero Lissoni

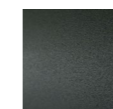
Stool in different heights and sizes available for indoor and outdoor.  
**Indoor version:** base in AISI 304 Stainless Steel square-section tube, matt satin-finish or in steel square-section lacquered in gunmetal grey colour or burnished colour. Seat frame in plywood padded with polyurethane foam covered with acrylic fibre layers, with fabric or leather upholstery.

**Outdoor version:** base in AISI 316 Stainless Steel square-section tube, matt satin-finish or lacquered with epoxy powder coating gunmetal grey or burnished colour. Seat frame in plywood for outdoor padded with open cell structure polyurethane foam DRYFEEL S, coated with waterproof fabric for outdoor. Upholstery with outdoor fabrics only.  
 Both versions fully removable by zippers.

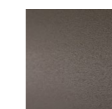
**Base**



Stainless Steel with Matt Satin Finish (In-Outdoor)



Steel with Gunmetal Grey Coating (In-Outdoor)



Burnished Painted Steel (In-Outdoor)

**Technical Drawings**

